

WIRELESS
VERTICAL MOUSE



WIRELESS VERTICAL MOUSE

WIRELESS
VERTICAL MOUSE



FC CE  

Thank you for choosing this vertical mouse. Please read the user manual carefully before you use this product.

Package content

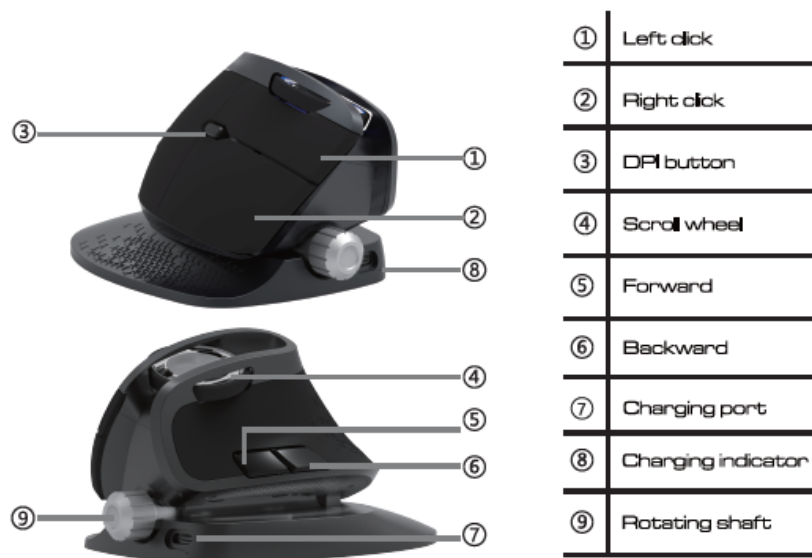
Mouse-----x1
 Manual -----x1
 CD (optional)-----x1
 Type-C braided cable-----x1
 USB receiver-----x1

Compatibility

Compatible with Windows 7, Windows 8, Windows 10, mac OS (Only basic function, no software available)

★ Customization software is for Windows Only.

Keys Function



*MAX 20 degree adjustment for the shaft, from 53 degrees to 73 degrees

*When charging, indicator light will be always on, when fully charged, the light is off, which only needs 2.5 hours.

1.



Indicator light
 ON/OFF switch
 BT program button
 2.4G nano receiver

Combo keys

Press DPI and roll scroll wheel together to shift between 3 light modes: single color breathing, 7- color cycling and off. Do not release DPI key before rolling up or rolling down the wheel.

Mouse Usage

Connect the mouse with your computer by USB port, it can work normally after detecting finished. If needed, you can set the button functions as following.

Note:Pressing the program button shows three states(B1/B2/ B3), and the three states stand for different connecting channels (2.4G---B1,BT 3.0----B2, BT 4.0-----B3). Each connecting channel is suitable for BT mode. The default setting of the mouse is 2.4G mode. The power switch also has memory, which means the mouse is in previous state when turning on the switch next time. The RGB light flashes, showing that the device is successfully connected.

A: 2.4G mode

- 1.Turn on the power switch.
- 2.Long press the program button until the indicator light is off, entering into the 2.4G mode.
- 3.Insert the nano receiver to the USB port of your computer.

2.

B: BT mode

- 1.The mouse has two BT channels——B2 and B3, and both compatible for MAC/WIN.
- 2.Pressing the program button shows the current channel. Then press again to switch the device(It does not mean matching the device). The indicator light flashes hard for 5s and the goes off.
- 3.Choosing one BT channel, pressing the program button for 3s until the indicator light falshes slowly, and it will enter into the programing mode.(The indicator light flashes for 120s. If ther is no device to coonect with the mouse during the period, the mouse will exit the BT programing modes and the light goes off).
- 4.Search BT Mouse(MAC) or BT Mouse(WIN) on your device and click to program,after successfully prograded, the light goes off.
- 5.Under Mac OS system, press the scroll wheel and forward key for 3s, the side keys can have the switching-screen function.

Rechargeable

Designed especially with a rechargeable Li-ion battery. If with light on, the mouse can last 2 weeks or so. With light off, the mouse can last 2 months or so.
(Theoretical condition: continuous use for 2 hours every day, 5 working days per week)

3 connection options

The mouse can connect to up to 3 devices (not at the same time). And there are 3 wireless connection options, 2.4G USB, BT 3.0, and BT 4.0.
There is a magnetic latch at the bottom for the dongle, it is sturdy and secured.

LED indicator light

For 2.4G mode, the B1 turns on. For BT mode, B2 and B3 turn on and support BT 3.0 and BT 4.0 respectively.

DPI indication:

The mouse has 4 gears DPI shift. Pressing the DPI key can change between 800,1600,2400 and 4000. The indicator light will be green and flash once, twice, three times , and four times respectively when changing the DPL.

The mouse will automatically enter into sleep mode and turn off light if there is no operation after 1 minute.

Programming

Press the program button to shift device, the light will flash and be off after 5 seconds. Long press the program button for 3 seconds to enter BT programming mode, the light will flash for 120 seconds, if no device is programmed within 120 seconds, the light will be off.

Driver Setting

1. Installation

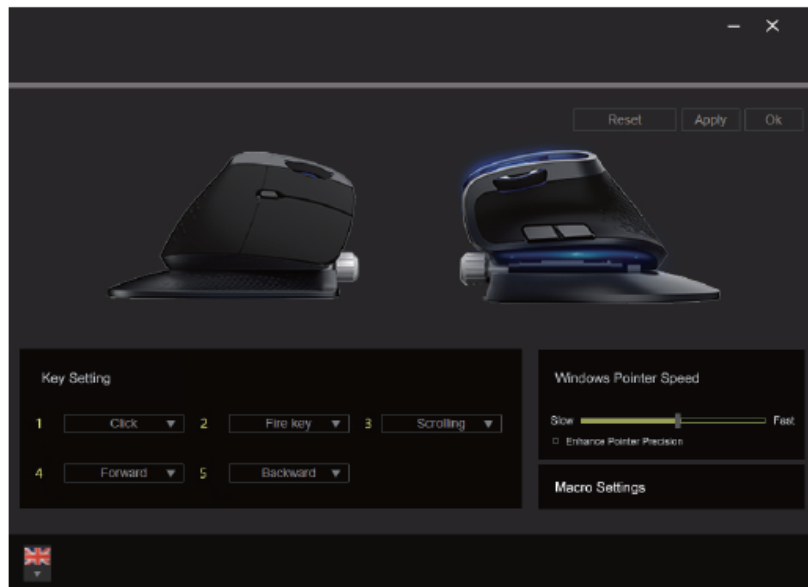
Download the driver from www.deluxworld.com or the CD in the package, install the driver.

Note: Please make sure this mouse is already connected to computer when setting the functions in the driver.

2. Settings

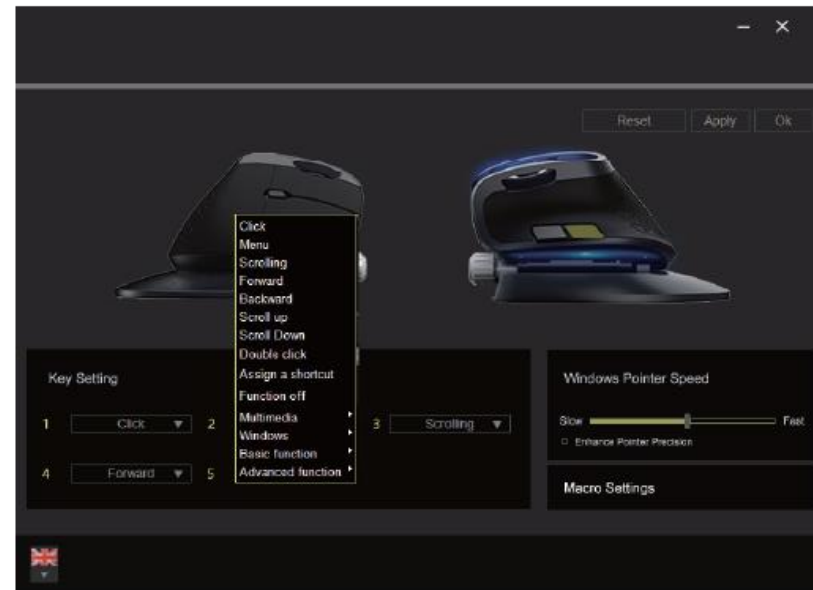
Please remember to click "Apply" to activate your settings, and you can click "Reset" to restore factory default settings.

Key settings



These functions can be customized as below: Click, Menu, Scrolling, Forward, Backward, Scroll up, Scroll down, Scroll left, Scroll right, Double click, Assign a shortcuts, Select macro, Function off, Multimedia, Windows, Basic function, Advanced function.

5.



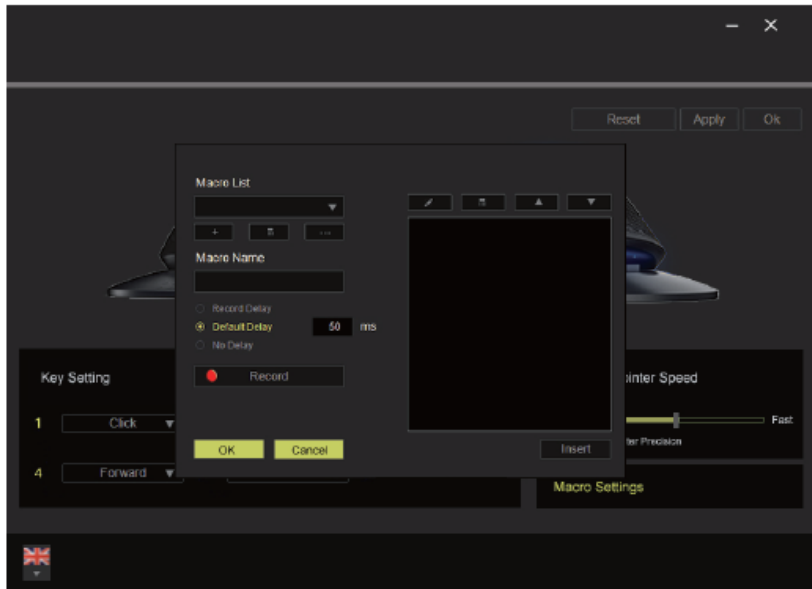
There are multiple choices under, Multimedia, Windows, Basic function, Advanced function menu.

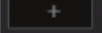
Windows Pointer Speed

Windows pointer speed is adjustable from slow to fast, and you can enhance pointer precision.

6.

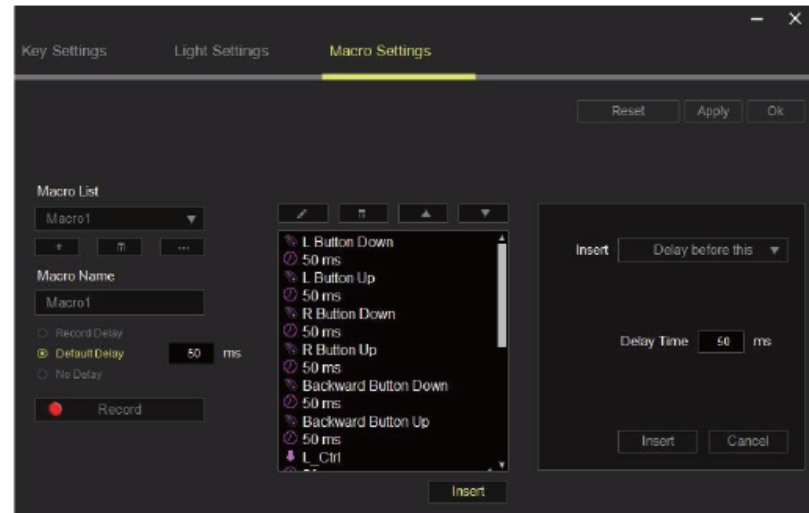
Macro Settings



Click  and type the name under "Macro Name" to create a macro command, click "Record" button and all your keystrokes and button presses will automatically register on the macro screen. When you finish recording your macro commands, click "STOP" button to finish.

The Macro session allows you to input the delay in-between commands. In "Record delay" the delay in-between commands are registered as how it is entered. The "Record delay" uses a predefined time (expressed in seconds) as the delay. And "No delay" omits all the pauses in-between keystrokes and button presses.

7.



The "Insert" button allows you to put in additional keystrokes, button presses or time delays either before or after the selected command. A new display window will appear beside the list of macro commands. You may add in a new set of macro commands by clicking the button on the keystroke menu, or input time delays on the duration time field using the delay menu.

CAUTION

RISK OF EXPLOSION IF BATTERY IS REPLACED BY AN INCORRECT TYPE.
DISPOSE OF USED BATTERIES ACCORDING TO THE INSTRUCTIONS.

8.